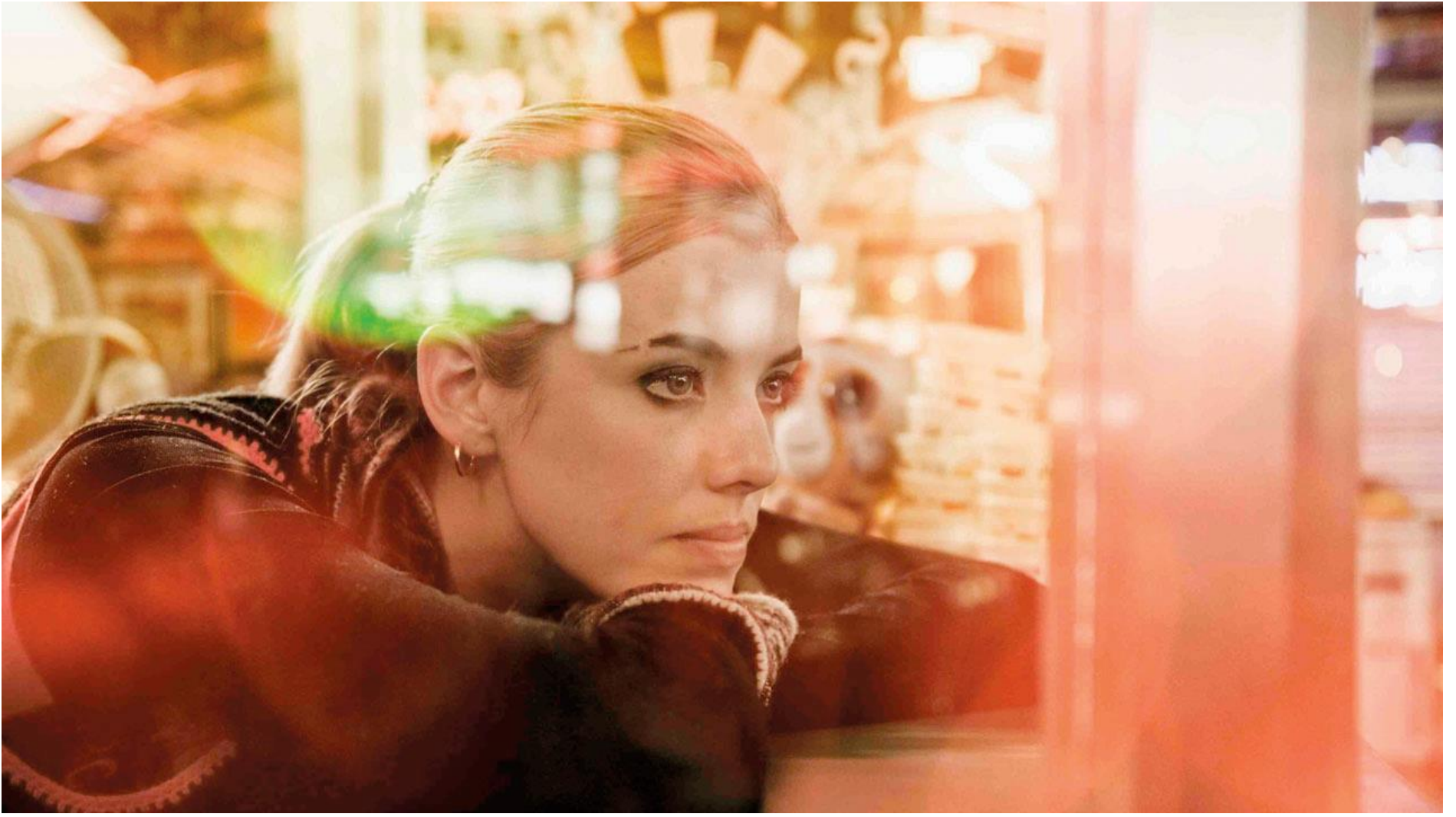


RELAXED SCREENING

Electricity



+ intro and discussion.

Like an ‘Electrical storm that starts in my skull’...

Those are the words Lily (Deyn), a young woman with epilepsy, uses to describe the sensations experienced from sporadic seizures – here vividly illustrated with surreal, hallucinatory visuals.

Trading the desolate beauty of the Lancashire coast for London’s anonymous city streets, Lily finds herself alone and drifting in the increasingly desperate search for her lost brother.

The Epilepsy Society were advisors on the film.

RELAXED SCREENINGS

Relaxed screenings are presented each month for those in the neurodiverse community, their assistants and carers.

- Customers can select their seats when they arrive in the auditorium. You may sit with your family/friendship group or there are some single seats if you prefer.
- Please leave space between yourself and other groups and retain your selected seats for the duration of the performance if possible.
- We encourage you to wear a face covering if you are able to.
- You are welcome to take refreshments into the auditorium but no hot food please.
- Doors will open 30 minutes before the screening.
- No trailers will be shown.
- The programme will be introduced.
- Our house lights will remain on a low level throughout the screening, and the volume will be turned slightly down.
- You will be able to leave the auditorium and return during the screening.
- There will be a quiet space to use if you need to leave the auditorium.
- We understand you may make some noise.
- Please ask us if you need help.

ELECTRICITY

Director: Bryn Higgins

Production Company:

Stone City Films

Producers: Clare Duggan, Bryn Higgins

Cast

Agyness Deyn (*Lily O'Connor*)

Christian Cooke (*Mikey O'Connor*)

Paul Anderson (*Barry O'Connor*)

Alice Lowe (*Sylvia*)

UK 2014

96 mins

BFI Southbank has been awarded the National Autistic Society's Autism Friendly Award.



**Presented in partnership with Citizen Autistic:
The London Autism Film Club.**

RELAXED SERIES:

NATURAL CONNECTIONS

A three-film series curated by

Benjamin Brown, founder of Citizen Autistic.

'Nothing in life is to be feared, it is only to be understood. Now is the time to understand more, so that we may fear less.'

Marie Curie (1867-1934)

Marie-Curie happens to be the name of a central character in *Frequencies*, the opening feature in a three-film series exploring difference and the sensory effects the ambient sights and sounds of nature can have upon both body and mind.

Throughout the series sound is made tactile, something to be touched and felt, through expressive, multi-layered sound design and sonorous soundscapes humming with the low-bass frequencies and rhythmical droning of today's hyper-stimulated world.

**The next relaxed screening is:
KES + intro and discussion
Monday 22 August 18:15 NFT3**

**We welcome your feedback on this screening.
Relaxedscreeningsfeedback@bfi.org.uk**

**Find out more at
bfi.org.uk/relaxed**