



**RELAXED SCREENING**

# Under the Skin

**Under the Skin**

Director: Jonathan Glazer

With:

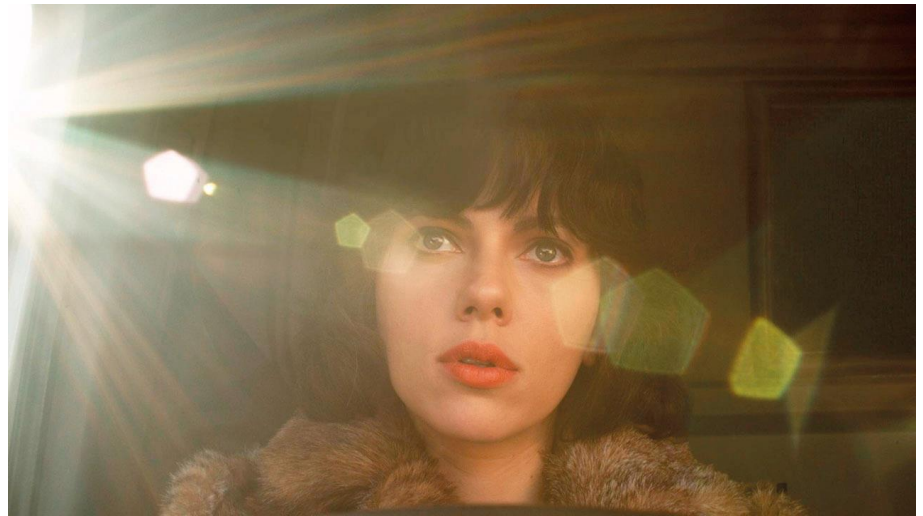
Scarlett Johansson

Jeremy McWilliams

Adam Pearson

UK/Switzerland 2013

108 mins



**We welcome your feedback  
on this screening.**

**Relaxedscreeningsfeedback  
@bfi.org.uk**

Find out more at

[www.whatson.bfi.org.uk](http://www.whatson.bfi.org.uk)

and [bfi.org.uk/relaxed](http://bfi.org.uk/relaxed)

*+ intro and discussion*

In this loose adaptation of Michel Faber's acclaimed 2000 novel, Scarlett Johansson's character expropriates the body of a young woman and prowls Scotland's winding back roads and city streets in search of fresh meat. Shooting on location, director Jonathan Glazer invites the audience to watch from the outsider's perspective and relate to their struggle to comprehend a foreign people in a foreign land.

This short series is curated by Benjamin Brown and presented in partnership with Citizen Autistic – The London Autism Film Club.



BFI Southbank has been awarded  
the National Autistic Society's  
Autism Friendly Award.

The  
**Steel**  
Charitable Trust

**The next relaxed screening is:  
FANTASIA + intro and discussion  
Monday 31 July 2023 18.00 NFT3**

**RELAXED SERIES:  
GHOSTS IN THE MACHINE**

'The eye sees only what the mind is prepared to comprehend.' –

**Henri Bergson**

The yawning Grand Canyon, chasms between perception versus reality, the complex, fluid nature of gender and identity and the Siren-like seductiveness of modern technology are among the themes and topics explored in this two-film pairing running in May and June.

From the mind-bending concept of 'Simulation Theory', the notion that reality is just a product of astronomically advanced computer programmes probed in the documentary *A Glitch in the Matrix*, to the alien gaze of Scarlett Johansson's curious cosmic interloper in the sensual sci-fi *Under the Skin*, these films each present divergent viewpoints and ways of thinking.

In today's hyper-connected world of runaway artificial intelligence and immersive, utterly convincing virtual realms, the series also begs viewers to ponder one key question: what does it mean to be human anyway?

After each screening join us for a relaxed discussion as we explore some of these themes. Benjamin Brown will host the discussion. This month it will be in the BFI Reuben Library.

## Relaxed Screenings

Relaxed screenings are presented each month for those in the neurodiverse community, their assistants and carers.

- Customers can select their seats when they arrive in the auditorium. You may sit with your family/friendship group or there are some single seats if you prefer.
- Please leave space between yourself and other groups and retain your selected seats for the duration of the performance if possible.
- We support you wearing a face covering if you choose to do so.
- You are welcome to take refreshments into the auditorium but no hot food please.
- Doors will open 30 minutes before the screening.
- No trailers will be shown.
- The programme will be introduced.
- Our house lights will remain on a low level throughout the screening, and the volume will be turned slightly down.
- You will be able to leave the auditorium and return during the screening.
- There will be a quiet space to use if you need to leave the auditorium.
- We understand you may make some noise.
- Please ask us if you need help.