



RELAXED SCREENING

Koyaanisqatsi

Koyaanisqatsi

Director/Producer: Godfrey Reggio

Production Company:

Institute for Regional Education

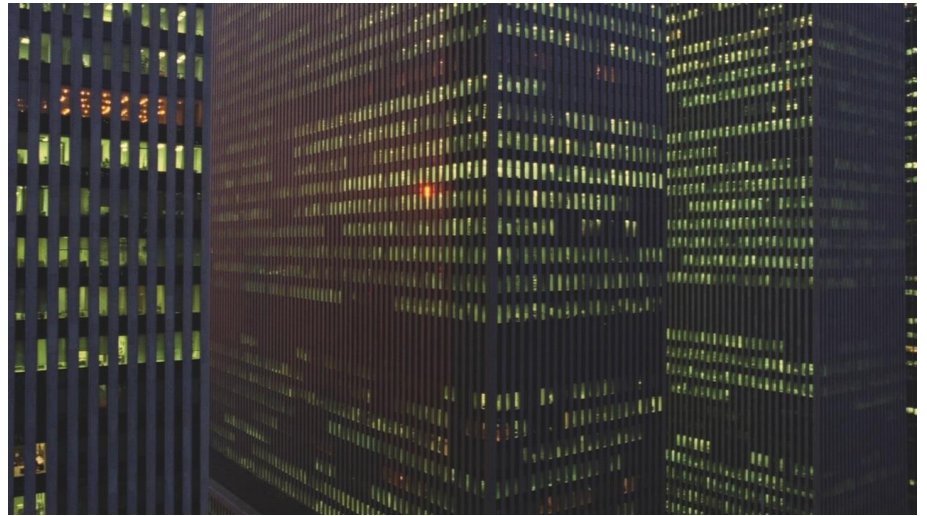
Director of Photography: Ron Fricke

Music: Philip Glass

USA 1983©

86 mins

Digital



**BFI Southbank has been awarded
the National Autistic Society's
Autism Friendly Award.**

**We welcome your feedback
on this screening.**

**Relaxedscreeningsfeedback
@bfi.org.uk**

The next relaxed screening is:

THIS IS GOING TO BE BIG

+ intro and discussion

Monday 30 September 18:10 NFT3

A timely alert to how life on Earth is changing, Godfrey Reggio's film was produced on a surprisingly small budget over many years, only to become an instant cult success. Philip Glass's gorgeous music swells in intensity as the growing impact of technology on humanity becomes more apparent within the film's procession of images. Join us after the screening to reflect on the film through a neurodivergent lens.

The post screening discussion will be led by creative Sam Chown Ahern, of the Neurocultures collective.

SHIFTING LAYERS: THE FILM SCORES OF PHILIP GLASS

The Fog of War: Eleven Lessons from the Life of Robert S.

McNamara

Mon 19 Aug 20:30; Mon 26 Aug 20:10

Candyman

Fri 23 Aug 18:20

Joseph Conrad's The Secret Agent

Fri 23 Aug 20:40

Koyaanisqatsi

Sat 24 Aug 12:50; Mon 26 Aug 11:30

BFI IMAX

Powaqqatsi

Sat 24 Aug 15:20

Naqoyqatsi

Sat 24 Aug 18:00

The Hours

Mon 26 Aug 17:30

Visitors + UK Premiere:

Once Within a Time

Tue 27 Aug 17:50

The Illusionist

Thu 29 Aug 18:10

Notes on a Scandal

Thu 29 Aug 20:40

Jane

Sat 31 Aug 15:10

Find out more at

www.whatson.bfi.org.uk

and bfi.org.uk/relaxed

BECOME A BFI MEMBER

Enjoy a great package of film benefits including priority booking at BFI Southbank and BFI Festivals.

Join today at **bfi.org.uk/join**

Relaxed Screenings

Screenings for neurodivergent audiences, with their companions and assistants.

- Customers can select their seats when they arrive in the auditorium.
- Please retain your selected seats for the duration of the performance if possible
- We support you wearing a face covering if you choose to do so.
- You are welcome to take refreshments into the auditorium but no hot food please.
- Doors will open 30 minutes before the screening.
- No trailers will be shown.
- The programme will be introduced.
- Our house lights will remain on a low level throughout the screening, and the volume will be turned slightly down.
- You will be able to leave the auditorium and return during the screening.
- There will be a quiet space to use if you need to leave the auditorium.
- We understand you may make some noise.
- Please ask us if you need help.